

Camera Equipment

Key Features

- Injection molded Nylon housing
- Stainless steel hardware
- Clear polycarbonate window
- Protected, insulated environment with desiccant pack for humidity control
- 1/3" CCD Monochrome or color models
- Voltage regulation /Power protection
- Input power in 12 – 24 volts AC or DC
- Universal mounting bracket included
- Tested to – 60°C (- 76°F)
- IP67, NEMA 6, NEMA 6P Ratings for protection from rain, snow, circulating dust and temporary submersion.

Product Description

A two-piece injection molded design allows a watertight seal for IP67 and NEMA 6 & 6P ratings. Made of nylon and stainless steel, this compact egg shaped camera has remarkable performance for extreme environments:

The EX10 includes voltage regulation, spike protection, and 12 VDC or 24 VAC operations. Pre-wired with a 5-foot (1.6 m) pigtail for plug and play installation, the EX10 is available with fixed lenses from 3.6mm to 12mm.

A nylon wall bracket is included with each order. A stainless steel U-bracket can be ordered as no-charge option in lieu of the wall bracket.

Applications

- Wash down applications
- Food processing
- Clean rooms
- Marinas
- Acid / alkali environment
- Swimming pools
- Sewage Treatment plants
- Freezer Storage Plants
- Clean rooms

Product Image



Above ↑: A black EX10 with a clear (non-tinted) window can be installed to black ceilings in commercial and industrial locations for discrete surveillance without loss of any lux levels. The optional BRKU10 bracket shown is made of stainless steel.

Below ↓: The EX10 is packaged with a standard wall bracket BRKW10 that is also made of nylon.



Specifications are subject to change without notice

Patent Pending - © Extreme CCTV Inc. 2004

EX10_v15.doc 040521

Dealer/Distributor



UK / Europe

USA / Canada

Toll Free (N.A.)

Tel: +44 (0) 1670 730 187

Fax: +44 (0) 1670 730 188

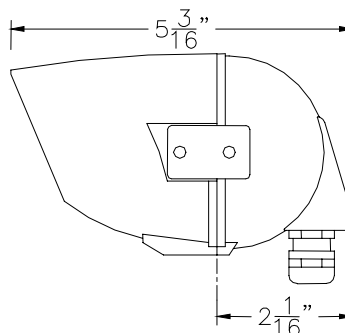
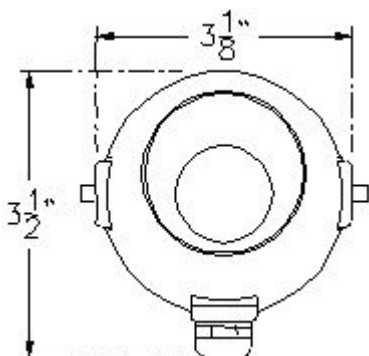
Tel: +1.604.420.7711

Fax: +1.604.420.3300

Tel: +1.888.409.2288

www.ExtremeCCTV.com

Technical Drawings



Specifications - EX10 S304

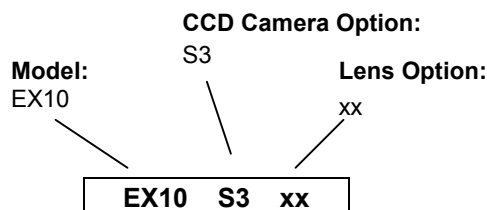
Example spec for S300 CCD – other CCDs available

Pick-up device	Mono 1/3" CCD B/W interline				
Resolution	>420 TVL				
Video output	1 V p-p, 75 Ohm, NTSC				
S/N	>50 dB				
Spectral sensitivity	400 to 940 nm				
Light sensitivity	0.05 Lux (F1.2)				
Electronic iris	1/60 to 1/100,000 second				
Auto gain control	>18dB				
Input power	12 VDC or 24 VAC				
Power consumption	<120mA at 12VDC				
Ambient operation temperature	-60° C to + 60° C (-76° F to +140° F)				
Fixed Lens (mm)	3.6	4.3	6.0	8.0	12
Viewing Angle (H)	68°	58°	42°	34°	23°
Enclosure	Injection molded nylon				
Max. Dimensions	132mm Length x 76mm Diameter (5-3/16" Length x 3" Diameter)				
Weight	375g (0.83 lb)				
Window	Polycarbonate (clear)				
Bracket "U"	U-bracket- stainless steel (optional)				
Bracket "W"	Reinforced nylon wall (standard)				

Note: All -50°C (and below) temperatures require special cold – crack cabling.

Part Numbers

(Other Special Order Models available on request)



CCD Camera Options:

C3	C300	Color 1/3" CCD 380 TVL
C7	C700	Color 1/3" CCD 480 TVL
S3	S300	Mono 1/3" CCD 420 TVL
S6	S600	Mono 1/3" CCD 600 TVL
SX4	SX400	Mono 1/3" LXR CCD 420 TVL
SX6	SX600	Mono 1/3" LXR CCD 600 TVL
CX4	CX400	Color 1/3" LXR CCD 380 TVL
CX6	CX600	Color 1/3" LXR CCD 480 TVL

Lens Options: (all micro type only)

Micro – Fixed Lenses – Replace xx with:

04 = 3.6mm	06 = 6.0mm	12 = 12mm
05 = 4.3mm	08 = 8.0mm	

Accessories

EXPS.002	Power Supply, 12 VDC, 500 mA
BRKU10	Bracket, Ceiling U-Type for EX10
BRKW10	Bracket, Wall type for EX10
BRKD10	Bracket, D- type for EX10

Specifications are subject to change without notice

Patent Pending - © Extreme CCTV Inc. 2004

EX10_v15.doc 040521

Dealer/Distributor



UK / Europe
USA / Canada
Toll Free (N.A.)

Tel: +44 (0) 1670 730 187
Fax: +44 (0) 1670 730 188
Tel: +1.604.420.7711
Fax: +1.604.420.3300
Tel: +1.888.409.2288
www.ExtremeCCTV.com

Key Features

- Extreme weather housing
- Injection molded ABS-Nylon resin enclosure
- Totally weatherproof for hot and cold environments
- Water-resistant
- Resistant to shock and impact
- Completely insulated internal chamber
- No requirement for internal heater or cooler
- 1/3" CCD, color / IR monochrome
- Installer-friendly, easy-access camera compartment
- IP66 compliant
- Extreme MFP Mechanical Filter technology
- Outstanding color imaging during day
- Exceptional Night Vision performance under infrared
- No focus shift or IR bleed
- Photocell-controlled Day-Night switching
- Varifocal 4.0-8mm auto-iris

Product Description

The EX14.MX4 is an all-environment camera for extreme weather applications. The simple, effective design allows performance under the most challenging of environmental conditions, including wash-down facilities, subzero temperatures and corrosive environments. The housing is compact, yet large enough to accommodate a 4-8mm varifocal lens and Extreme's mechanical filter imaging technology.

The EX14.MX4 incorporates Extreme's MFP technology, a photocell-controlled filtering technique that eliminates problems such as focus shift and IR bleed. The result is an excellent 24/7 camera, with brilliant color performance during the day and exceptional Night Vision under infrared and low-light.

Made of an injection-molded ABS/Nylon resin, the EX14.MX4 is engineered specifically to withstand hot, cold and wet environments. A totally insulated inner chamber eliminates the requirement for internal heaters and blowers. Compliant to IP66, the EX14.MX4 also features an easy-access camera compartment for easy camera adjustments and installation.

The EX14.MX4 is ideal for extreme environment applications and comes complete with nylon wall bracket for fast and easy installation.

Product Images



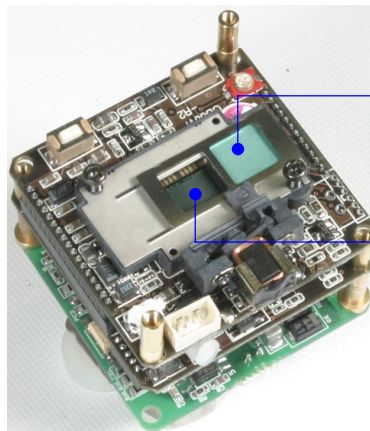
Applications

- Wash down applications
- Food processing
- Outdoor environments
- Marine applications
- Artic conditions
- Acid / alkali environment
- Swimming pools
- Sewage Treatment plants
- Sub-zero weather applications
- Clean rooms
- Coastal environments
- Ports and harbours
- Industrial freezers and refrigerators

Technical Specifications

Construction	Injection-molded ABS / Nylon
Image Sensor	1/3" LXR CCD
Lens	Varifocal 4.0-8mm Auto-iris, IR-optimised
Effective Pixels	NTSC: 765 (H) x 494 (V) PAL: 752 (H) x 582 (V)
Horizontal resolution	450 lines color imaging 570 lines B/W imaging
Scanning System	525 lines interlaced (NTSC) 625 lines interlaced (PAL)
Synchronization	Internal
Output Signal	Standard composite signal 1Vpp composite video into 75Ω
Sensitivity	0.2Lux with F2.0 lens Zero lux with infrared
Electronics Iris	1/60 ~ 1/100,000 (NTSC) 1/50 ~ 1/100,000 (PAL)
Signal to Noise Ratio	Greater than 46dB (AGC off)
Gamma	0.45
AGC	On (4-26dB max)
Input Voltage	12 VDC / 24 VAC
Power Consumption	2W or less
Internal Heater / Cooler	Not required
Window	Flame resistant VO-Margard
Operational Temperature*	-40°C to +50°C (-40°F to 122°F)
Storage Temperature	-50°C to +70°C (-58°F to 158°F)
Wall Bracket	Included
Color	Black
External Dimensions	180mm (l) x 85mm (w) x 85mm (h) 7.1" (l) x 3.3" (w) x 3.3" (h)
Internal Dimensions	100mm (l) x 60mm (w) x 60mm (h) 3.9" (l) x 2.4" (w) x 2.4" (h)
Diameter of Front Window	50mm (2.0")
Weight	0.7kg (bracket included)
Environmental	IP66 compliant
Weight	0.7kg (bracket included)

MFP Technology



Day: IR-cut filter delivers accurate color by filtering IR light

Night: IR-pass filter, photocell-controlled, allows optimal performance in dark



Conventional dual mode color / IR camera:
Video taken without MFP technology suffers from IR bleed and poor quality color.



MFP Technology:
The same scene shows excellent color performance under Extreme's mechanical filter technology.

A&E

Available upon request.

Please contact Sales@ExtremeCCTV.com

Key Features

- Advanced Twin Camera IDN™ camera
- Guaranteed superb color by day
- Guaranteed infrared monochrome by night
- Patent pending design
- 850nm or 940nm infrared illumination
- Control board for automatic IR on/off
- No “focus shift” problems
- Compact All-Weather housing
- Plug and Play installation
- Low voltage operation
- Low power consumption

Product Description

The EX82DXL is designed for the professional security provider who requires an easy to install fixed camera that performs without compromise on a 24-7 Day/Night basis.

A tough all weather housing with a 6mm Lexan window incorporates all of the EX82DXL's electronics. Low voltage operation, solid state CCD technology and controlled regulated voltage means the EX82 will operate for years without servicing or maintenance.

Modelled after the award-winning EX38 IDN camera the EX82DXL is the first dual sensor IDN camera that incorporates LED Infrared and LXR CCD optics.



Day time – IR Off
High resolution color
with auto-iris
varifocal lens.



Night time – IR On
High Sensitivity
infrared response
with varifocal lens.

Product Image



Applications

- Perimeter surveillance
- Military bases
- Parking lots
- Commercial buildings
- High-end residential

Certification / Compliance

CSA-NRTL: LR 113310

Class: 2226 02 / 82 Commercial Video Equipment

Safety: OSHA / ANSI / UL / CSA Type 4x / NEMA 4x
CSA Std. C22.2 – Various Sections
UL 50 – Enclosures for Electrical Equipment
UL 2044 – Commercial CCTV Equipment

A&E

The camera shall be an IDN Integrated Day/Night camera to provide color by day and infrared enhanced vision by night. The camera shall create a minimum 20 db S/N picture at 100ft (30m) in zero Lux at total darkness. The camera shall consist of dual 1/3" CCD sensors, LXR type for night vision and Hyper Had for day vision. The camera shall be equipped with an infrared array of 90 LEDs attached to an efficient heat sink base and operating at 850 nanometers. Both sensors shall be equipped with 4-8 mm or 6-15 mm varifocal lenses. The color sensor lens shall be an auto-iris type. The camera shall switch from color mode to monochrome by way of a sensitivity-adjustable photocell. All of the electronic equipment shall be contained in a weatherproof and waterproof housing.

Specifications are subject to change without notice

Patent Pending - © Extreme CCTV Inc. 2004

EX82DXL_v23.doc 040512

Dealer/Distributor



UK / Europe

USA / Canada

Toll Free (N.A.)

Tel: +44 (0) 1670 730 187

Fax: +44 (0) 1670 730 188

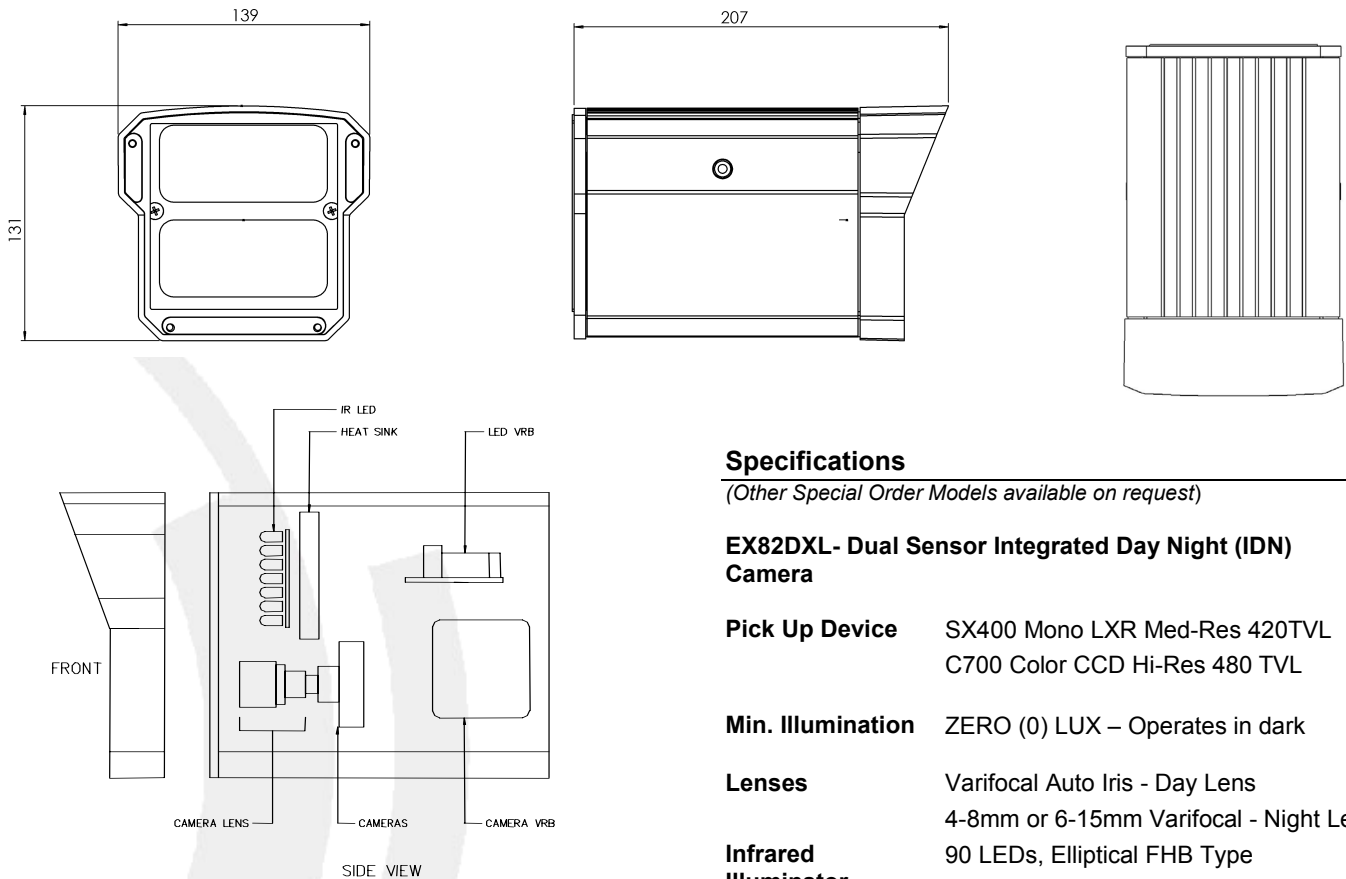
Tel: +1.604.420.7711

Fax: +1.604.420.3300

Tel: +1.888.409.2288

www.ExtremeCCTV.com

Technical Drawings



Part Numbers

(Other Special Order Models available on request)

EX82 D8V4 b	EX82DXL, 850 nm, V4-8mm Lens - black
EX82 D8V4 w	EX82DXL, 850 nm, V4-8mm Lens - white
EX82 D8V8 b	EX82DXL, 850 nm, V6-15mm Lens - black
EX82 D8V8 w	EX82DXL, 850 nm, V6-15mm Lens - white

Special Order:
EX82 D9V4b/w as above with 940 nm LED's

EXMB.025 Wall Bracket - included

Optional:

EXPS.008	PSU, 120 VAC / 24 VAC, 1.0A (NA)
PSU230/24	PSU, 230 VAC / 24VAC, 1.0A (Europe)

Specifications

(Other Special Order Models available on request)

EX82DXL- Dual Sensor Integrated Day Night (IDN) Camera

Pick Up Device	SX400 Mono LXR Med-Res 420TVL C700 Color CCD Hi-Res 480 TVL
Min. Illumination	ZERO (0) LUX – Operates in dark
Lenses	Varifocal Auto Iris - Day Lens 4-8mm or 6-15mm Varifocal - Night Lens
Infrared Illuminator	90 LEDs, Elliptical FHB Type 850nm or 940nm (optional)
Photocell	Control Pot Included
Power Control	VRB for 12VDC or 24VAC operation
Consumption	22 W max
Voltage	12 VDC or 24 VAC selectable
Construction	Robust Aluminium Casting
Window	6mm Polycarbonate on metal frame
Dimensions	131mm (H) x 139mm (W) x 207mm (D) 5.2" (H) x 5.5" (W) x 8.2" (D)
Weight	3.4 lbs (1.4 kg)
Operational Range	-50°C to +50°C (-58°F to +122°F)

Note 1: All -50°C (and below) temperatures require special cold-crack cabling.

Note 2: If installing multiple units from a common power supply, the power supply **MUST** provide individually isolated power to each unit. Contact Technical Support at Extreme CCTV for details.

Specifications are subject to change without notice

Patent Pending - © Extreme CCTV Inc. 2004

EX82DXL_v23.doc 040512

Dealer/Distributor



UK / Europe

USA / Canada

Toll Free (N.A.)

Tel: +44 (0) 1670 730 187

Fax: +44 (0) 1670 730 188

Tel: +1.604.420.7711

Fax: +1.604.420.3300

Tel: +1.888.409.2288

www.ExtremeCCTV.com

Key Features

- MFP Technology (Mechanical Filter with Photocell)
- 1/3" LXR CCD for excellent IR sensitivity, low smear, low streak and excellent anti-blooming characteristics
- Photocell-controlled switching between day and night
- Dual window (IR-Cut and IR-Pass) mechanical filter for optimized 24/7 performance
- Zero focus shift from color to IR modes
- Exceptional daytime color, outstanding night-time IR
- Integrated Day-Night (IDN™) design with 18 LEDs at 840nm for zero lux effectiveness
- Optimised LED Array for 40 feet of evenly-distributed active infrared Night Vision
- 12 VCD / 24 VAC operation, VRB power protected
- Separate, dedicated VRBs for CCD and IR Array ensures increased operational stability
- Cast & extruded aluminum
- Easy access for lens adjustments
- Varifocal 4-8mm auto-iris lens
- All-Weather sealed for extreme environments

Product Description

The EX27MNX.4 is an all-weather day/night camera that incorporates MFP Technology for exceptional day/night performance. Using mechanical filter technology, the EX27MNX.4 delivers brilliant color during the day and outstanding IR sensitivity at night.

The EX27MNX.4 uses Extreme's proprietary LXR CCD technology for outstanding spectral response in both visible and near infrared regions. The high-resolution sensor produces an amazing 570 TVL in monochrome and 450 TVL in color. As with all LXR-type sensors, the video signal is characterized by low-smear, low-streak and excellent anti-blooming characteristics.

An IR-Cut filter eliminates IR bleed during the day to ensure accurate color video. At night, a photocell-controlled IR-Pass filter optimises Night Vision performance. Together with a high-efficiency 18-LED infrared, the EX27MNX.4 delivers 40 feet of evenly-distributed Night Vision.

The EX27MNX.4 features an all-weather housing field-proven for successful application in extreme environments. The cast and extruded aluminum housing accommodates a 4-8mm varifocal, auto-iris lens for extra installation versatility.

Rugged, compact, power protected and extreme weather-sealed, the EX27MNX.4 is an ideal day/night camera for a wide variety of technical surveillance applications.

Product Image



Applications

- Commercial security
- Critical infrastructure
- Homeland security
- Public area surveillance
- Industrial sites
- Ports and harbors
- Schools, colleges and universities
- Outdoor surveillance
- Airports
- Extreme weather environments



Conventional dual mode color / IR camera:
Video taken without MFP technology suffers from IR bleed and poor quality color.



MFP Technology:
The same scene shows excellent color performance under Extreme's mechanical filter technology.

Specifications

(Other Special Order Models available on request)

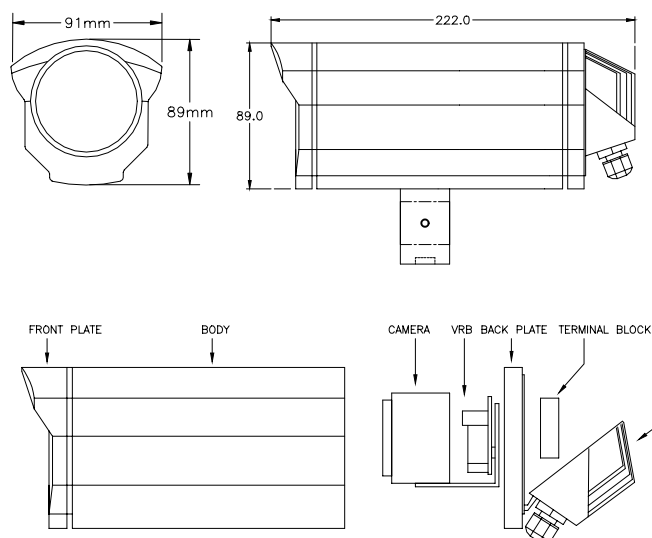
CCD Camera	MX400 (with MFP Technology)
Image Sensor	1/3" LXR Interline CCD
Filter	Dual-window mechanical type
Day-Night Switching	Photocell-controlled, automatic
LED Type	High-efficiency 850nm, even distribution IR
Number of LEDs	18
Lens	Varifocal 4-8mm, auto-iris
Effective Pixels	NTSC: 765 (H) x 494 (V) PAL: 752 (H) x 582 (V)
Resolution	450 lines color imaging 570 lines B/W imaging
Scanning System	525 lines interlaced (NTSC) 625 lines interlaced (PAL)
Output Signal	Standard composite signal 1Vpp composite video into 75 Ohms
Sensitivity - 30 IRE	0.2 Lux with F2.0 lens 0.0 Lux with infrared on
Electronics Iris	1/60 ~ 1/100,000 (NTSC) 1/50 ~ 1/100,000 (PAL)
S/N Ratio	Greater than 46dB (AGC off)
Gamma	0.45
AGC	On
Consumption	4.5W or less
Voltage	12 VDC or 24 VAC
Power Draw	540 mA @ 12 VDC, 6.5 W (max)
Construction	Robust aluminum casting / extrusion
Weight	3.1 lbs (1.4 kg)
Color	Black (other colors by special order)
Mount	Double U-Mount Supplied with 1/4-20
Environmental	IP66, NEMA 4 compliant
Temperature	-50°C to 50°C (-58°F to 122°F)
Wall Bracket	EXMB.023 (order separately)
Sunhood	EXSH.27 (order separately)

Note: Environments -50°C and below require cold-crack cabling.

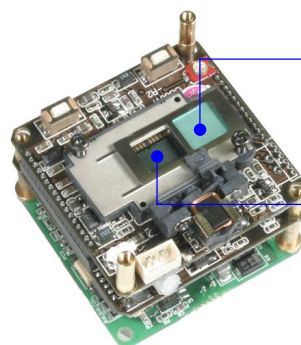
Certifications / Compliance

CSA Type 4X	Outdoor Weather Rating
CSA C22.2	General Electrical Requirements
UL Std No 50	Enclosures for Electrical Equipment
UL Std No 2044	Commercial CCTV Equipment

Technical Drawings



MFP Technology



Day: IR-cut filter delivers accurate daytime color by filtering IR light

Night: IR-pass filter, photocell-controlled, allows optimal performance in dark

Part Number

EX27MNX.4-VA408

1/3" LXR CCD, color / mono
High-efficiency 18 LED Array, 850nm
Photocell-controlled mechanical filter (MFP)
Varifocal 4-8mm auto-iris
All-weather housing, aluminum

Specifications are subject to change without notice
Patent Pending - © Extreme CCTV Inc. 2005

EX27MNX.4-VA408_TS_050118.doc

Dealer/Distributor



UK / Europe
USA / Canada
Toll Free (NA)

Tel: + 44 (0) 1670 730 187
Fax: + 44 (0) 1670 730 188
Tel: + 1 604 420 7711
Fax: + 1 604 420 3300
Tel: + 1 888 409 2288
www.ExtremeCCTV.com

DTK-4TPV

Electrical Specifications

Class:	Low voltage protection for twisted pair video systems
Installation Point:	In series with the equipment to be protected
Connection Method:	Screw terminals, 14-26 awg wire
Continuous Current:	<150mAmps
Response Time:	<5 nSec
MCOV:	6.8VDC
AC Protection Modes:	L - G (All lines protected)
Service Voltage:	<5V
Max Surge Current:	120A (per pair)
Max Energy Dissipation:	1200 Watts (per pair)
Wiring Configuration:	2,4,6 and 8 wire Models Available
Typical Let Through Voltage:	6.8-8
Band Pass:	0-10Mhz
Insertion Loss:	<0.5dB @ 0-10Mhz

Physical Characteristics

Product Description:

Housing:	High impact plastic
Color	Black
Size	3.01 in. x 1.6 in. x 1.6 in.
Weight	0.200